

Beryl for New Developments



Beryl in Plymouth

In Plymouth Beryl have a 5 year contract to provide a 550 e-Bikes across 80-90 locations in the city.

People can quickly download the Beryl app and start using the e-Bikes straight away.

Our system is digital first meaning there are a number of quick interventions that we can enable to assist you with sustainable travel commitments or targets.



Memberships

Free or reduced cost access for new residents / employees is a great way to encourage sustainable travel at new developments.

We can provide bulk bundles of minutes for distribution to residents (via voucher code), or we can offer annual memberships at a discounted rate (that can be auto applied via the app). Contact ben.lee@beryl.cc for more information on a bespoke package offer for your development.

Minute bundle example cost:

1,000 x 200 minute bundles =
£27,000 (£30,000 value, inc. 10% discount)



Docking Station

Convenience is key when trying to encourage ridership. A docking station located outside the development provides maximum convenience for new residents / workers.

For a small development we recommend ~10 docking points.

For larger developments we would recommend 10+ docking points and would require funding for additional e-Bikes.

Cost:

- £4,500 for 10 docking point station (inc. installation)
- £2,400 per additional e-Bike.



Parklets

The Beryl designed parklet brings a best in class approach to docking stations.

Our parklets provide, seating, planting, information totems and an area to park our vehicles.

They improve the urban realm and provide benefits to everyone.

Cost: Between £7,500 – £15,000 depending on functionality for 10 e-Bike station



Bike Share



Bike Share



Beryl Bikes.
Ready to ride, any time.

Hire a Beryl Bike here

Beryl's Norwich's very own bike share. Beryl makes it easy and convenient for people to cycle and explore the city on two wheels.

Unlock a bike using the Beryl app and enjoy a green, clean journey around the city. Then find another Beryl bike, park, and lock your bike.

About this parklet

This parklet has been funded by the Transport for Norwich partnership through the Transforming Our Road Parklets make our streets greener, safer and encourage passengers to use public transport. This parklet also encourages people to explore the city. This parklet also encourages people to use public transport to travel one of our trips.

The bike parking at this parklet is for Beryl Bikes only. If you need to lock your personal bike, please find your nearest bike rack.

Download the Beryl Bikes app
to ride now

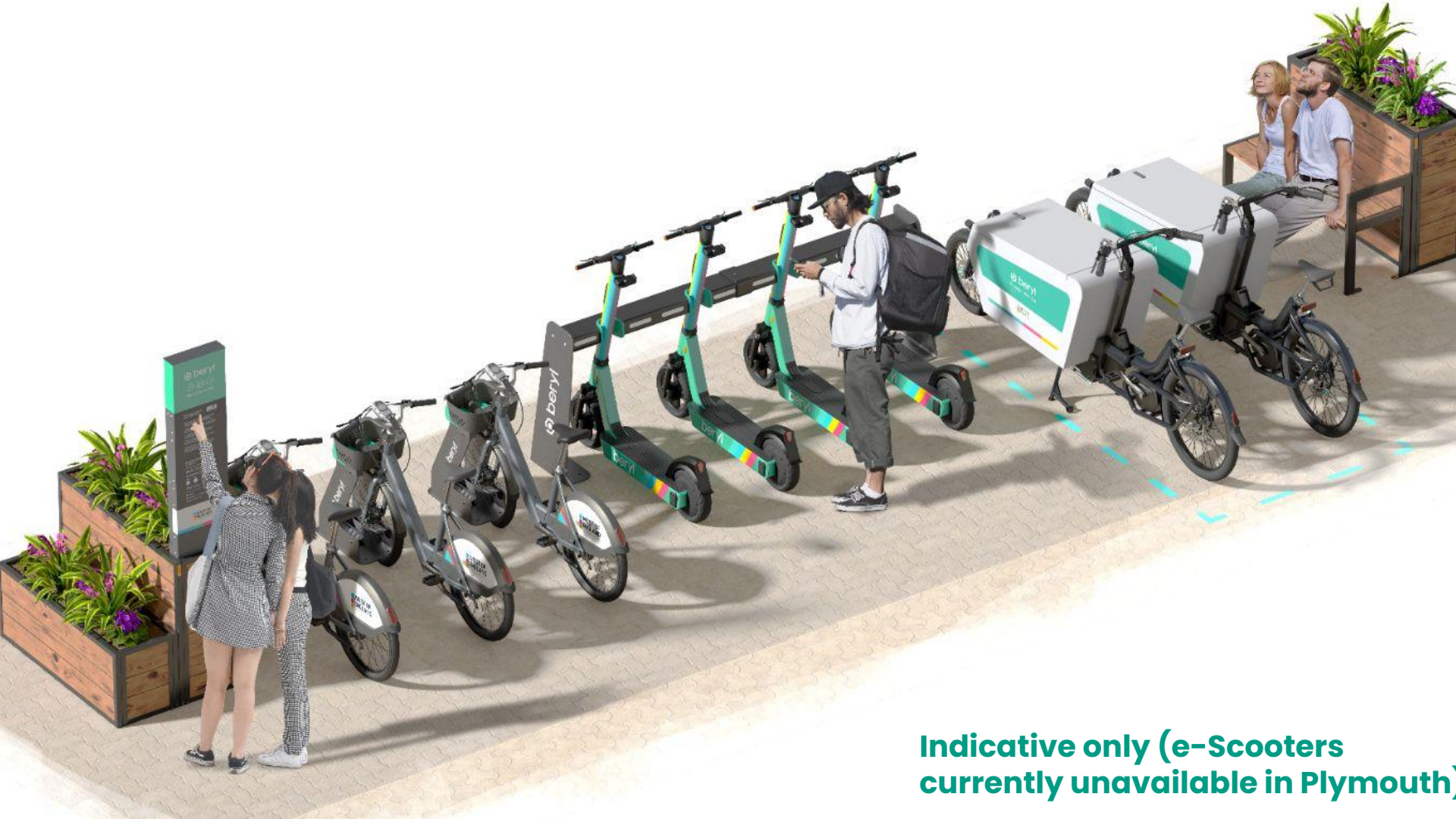
Search for 'Beryl Bikes' in your app store.



Download the Beryl Bikes app

Lock





Indicative only (e-Scooters currently unavailable in Plymouth)

e-Cargo bikes

e-Cargo bikes are an important vehicle that can help further reduce reliance on private car ownership.

We can install an e-cargo bike hub at a new development that will provide 1 or more e-Cargo bikes all accessible via the Beryl app.

Cost: £10-12k per cargo bike (and hub)

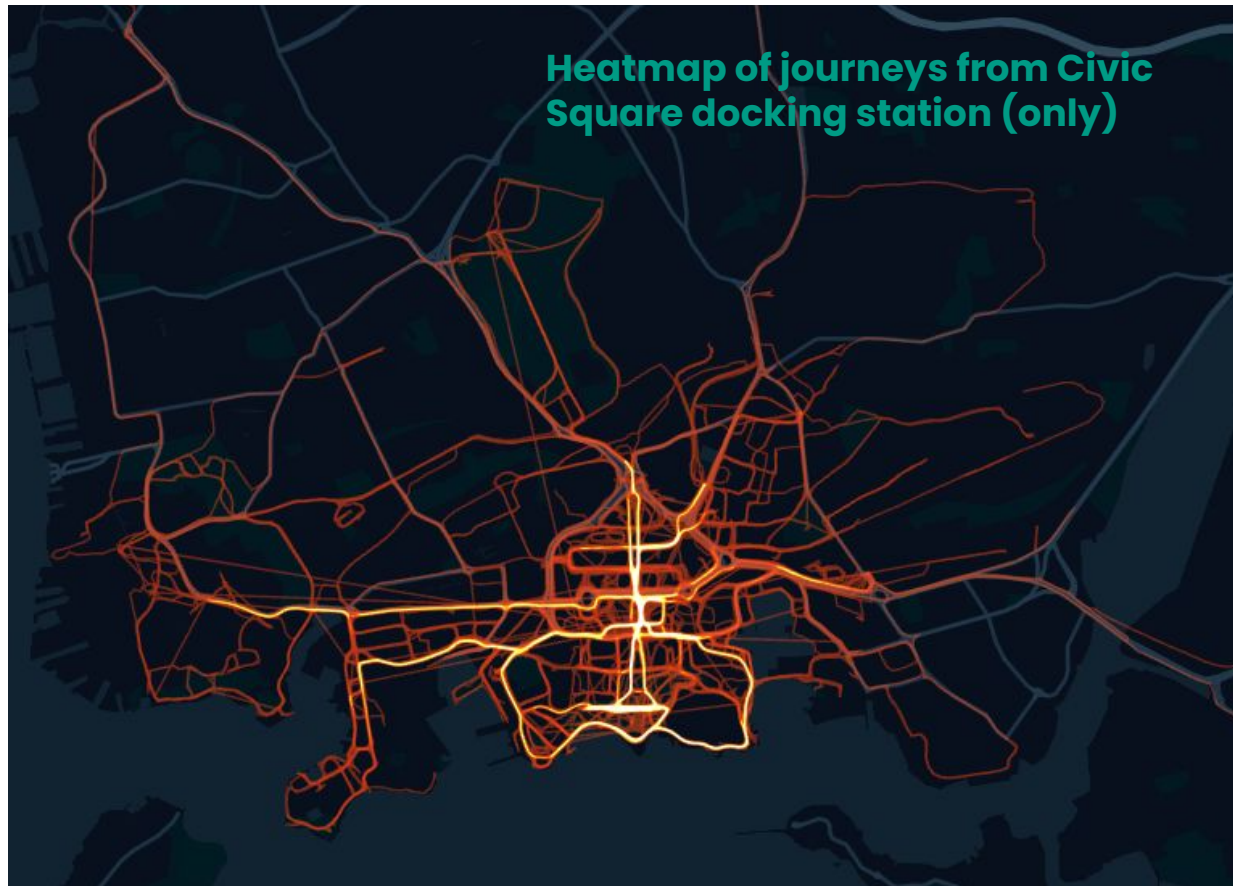


Data and impact

Our data can provide a detailed insight into travel behaviours at each development.

We can share this data in graphical dashboards that can provide useful information for Travel Plan Monitoring and any CSR / Carbon Neutral etc reporting your business may undertake.

We can provide both quantitative and qualitative data on all the Beryl e-Bike trips generated at your development.

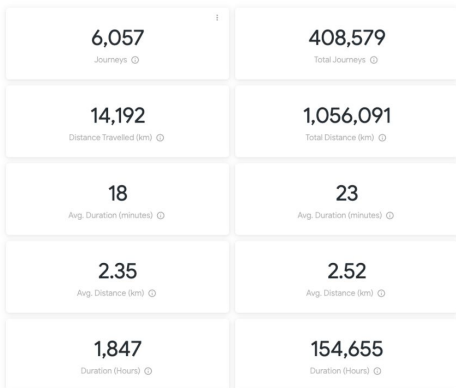


West Midlands Cycle Hire – Weekly performance report

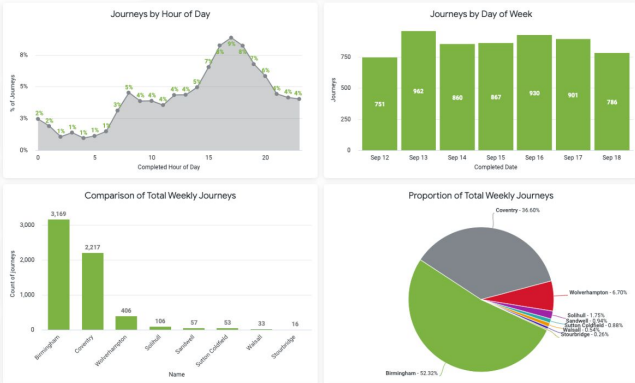
Schema Name: **West Midlands** | Week: **is in the last 1 complete week** | Frame ID: **is not 99999 or 99998 or 99991 or 99993 or ...** | Comparison Week: **is in the last 31 complete days** | Start Service Area ID: **is 31 or 33 or 34 or 35 or 36 or 37 or 39 or 4...**

2m ago

Overview of Journeys

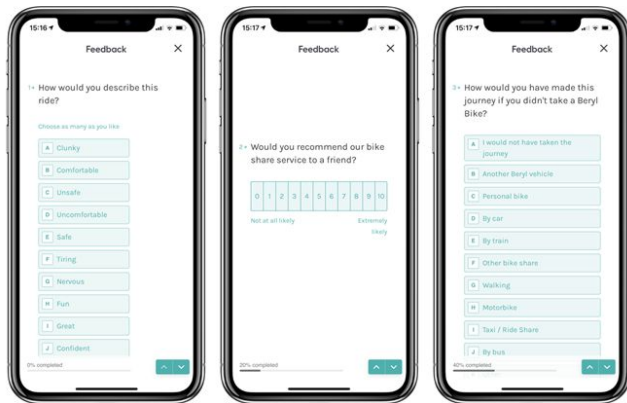
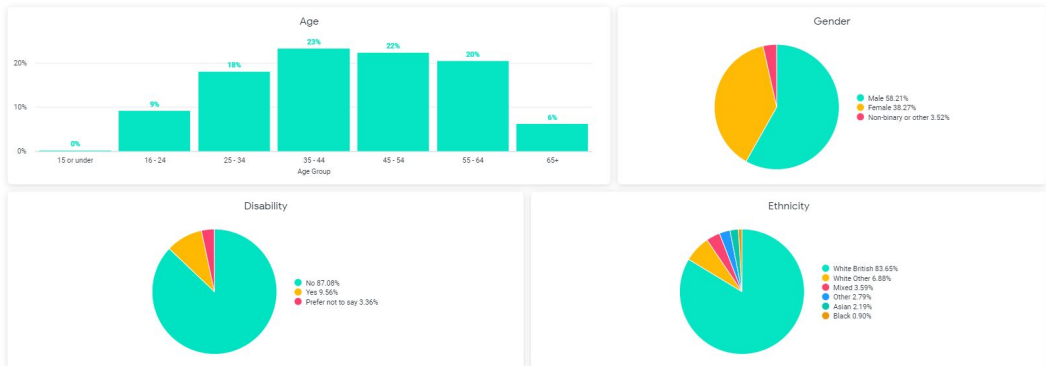


2022-09-12 to 2022-09-18

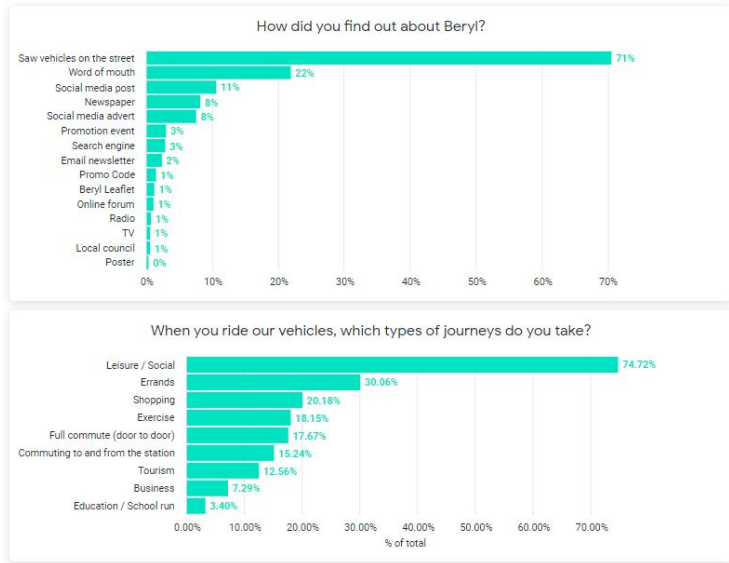


User demographics

Just now



User behaviour and motivation



Patrick Donnelly
Head of Policy
patrick.donnelly@beryl.cc

Beryl, The Frames, London, EC2A 4PS

+44 0203 1965 244

